



## AX-KPC 2.8 OLED Touchscreen

The Axium KPC2.8 keypad is a fully programmable 2.8" colour OLED Touchscreen.

Being capable of learning and sending IR commands the KPC2.8 can be used as a standalone keypad to control virtually any IR controlled device.

When the KPC 2.8 is used with an Axium multi-zone amplifier full 2-way feedback of source selection, power, mute and volume status is provided.

Full 2-way RS232 control and paging outputs are available on the KPC 2.8 when used with the Axium AX-R4 RS232 router and the prebuilt Axium applets.

Setup by the Axium Keypad manager software, the KPC2.8 includes a host of features to simplify programming and enhance amplifier and source equipment control.



### Specifications & Features

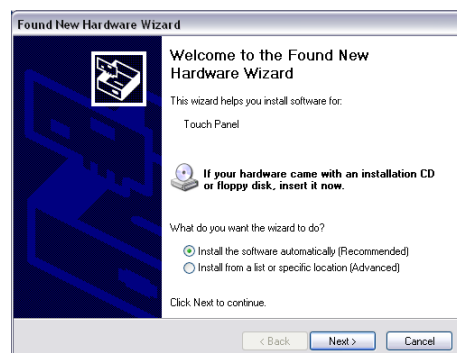
- 2.8" OLED touch panel
  - Contrast ratio = 10000:1
  - Viewing angle = 170° (H & V)
  - 240 (RGB) x 320 Dot
  - 64K Colours
- Operating voltage = 12VDC ± 3V
- Current draw typically 100mA, Maximum = 140mA
- Memory: 8Mbytes Flash for GUI and IR commands.
- Wiring: Up to 300m of CAT5E 'Home run' cable.
- Connection: RJ45 plug.
- Dimensions:
  - Width: 74.8mm (2.95")
  - Height: 119.54mm (4.7")
  - Plate depth: 6.7mm (0.264")
  - Depth behind plate: 14.5mm (0.57")
  - Wall cutout: 45mm (1.77") x 75mm (2.95")
- White, Black, Ivory, and Matt Silver cover plates supplied.
- IR learning of both Modulated and Pulse IR codes. Modulation frequencies up to 500 KHz.
- Large IR database supplied, IR codes using the 'HEX' code format may be imported into Axium keypad manager program.
- Full featured conditional flow macro functions.
- User defined button sounds: wav file
- Microphone for paging applications via AX-R4 and connected multi-zone amplifier/s
- Portrait or Landscape display orientation
- Range of Skins available for graphical user interface (GUI)
- Control types:
  - Animated Buttons
  - Buttons with feedback
  - Sliders
  - Numeric Readouts
  - Applets providing RS232 control and Metadata display.
- Support for Transparent and multilayer images
- Anti-aliased Text with user defined Font, Colour and Unicode support.
- Background images may be imported and scaled. Supports BMP, JPG, PNG, and GIF formats.
- Polygon button outlines provide very close button spacing.
- 2 way RS232 and IR routing when used with the Axium AX-R4 and supplied Applets. Current Applets:
  - Integra Tuner, CD, DVD & Receiver including Z2 and Z3.
  - Sonance I-Pod docking station.
- Future Applets:
  - Imerge & Request DMS.
  - DLO docking station.
  - Vantage Lighting ... with more to follow.
- Keypad firmware updated using Axium Keypad Manager Program.

### Software Installation and Programming

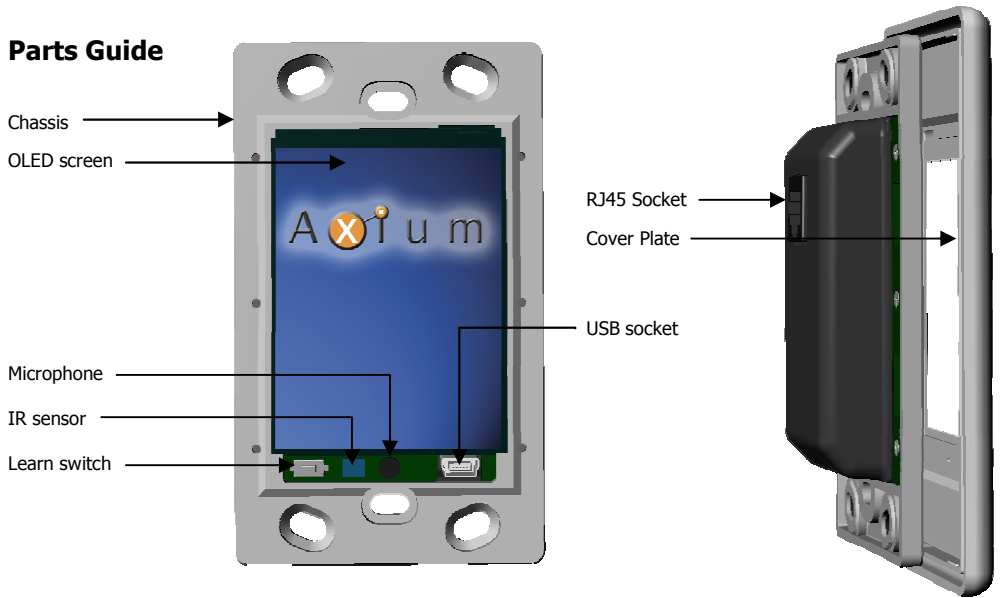
The Axium Keypad Manager Software is exclusively used to compile the keypad configuration (programming) and firmware update the KPC2.8. The program runs on a Windows XP or Windows Vista PC. Axium Keypad Manager Installer and Help Document are provided on the product CD. Updates are available from the Axium website: [www.axium.co.nz](http://www.axium.co.nz)

Run the AKM installer from the product CD. When first connecting the KPC 2.8 via USB (KPC2.8 must be powered), windows detects the new device (KPC 2.8) and runs the 'Found New Hardware Wizard'. Select; Install the software automatically (Recommended).

Once connected the KPC 2.8 may be uploaded with a Keypad configuration, or the Keypad's configuration may be downloaded to AKM.



## Parts Guide



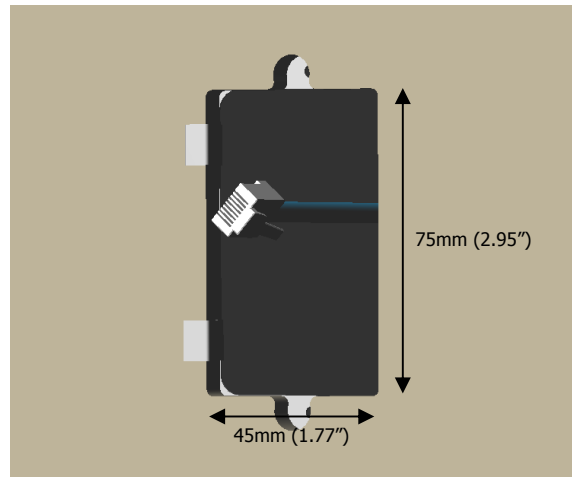
## Installation

- The KPC2.8 chassis mounts directly to the wall surface
- Requires a standard single gang flush box for fixing.
  - Cut out the required hole in the wall above the flush box
  - Terminate an RJ45 plug to the CAT5E cable – see wiring below
  - Connect the RJ45 plug to the KPC2.8
  - Secure the keypad in position using the supplied Flush-box screws
  - Connect the USB lead to a PC running Axium keypad manager, Power the keypad via the CAT5E cable – requires remote termination to either an Axium multi-zone amplifier, EX4X4 or AX-R4, and Program the keypad with the required keypad configuration.
  - Clip the Cover plate into position.

## Wiring

Use CAT5E 'home runs' with a maximum length of 300m. Terminate with a RJ45 plug. Use the standard 568-B colour code:

Pin	Wire Colour	Keypad function
1	White/Orange	+12V DC
2	Orange	0V
3	White/Green	IR output
4	Blue	A (RS485)
5	White/Blue	B (RS485) / Data
6	Green	0V
7	White/Brown	Balanced Mic-
8	Brown	Balanced Mic+



## For U.S. models FCC information for User

### CAUTION:

The user changes or modifications not expressly approved by the party responsible for compliance could void the user's authority to operate the equipment.

Note: This equipment has been tested and found to comply with the limits for a Class B digital device, pursuant to Part 15 of the FCC Rules. These limits are designed to provide reasonable protection against harmful interference in a residential installation.

## For Australia and New Zealand models

**NOTE:** THIS CLASS B DIGITAL APPARATUS COMPLIES WITH CISPR 22:2008

